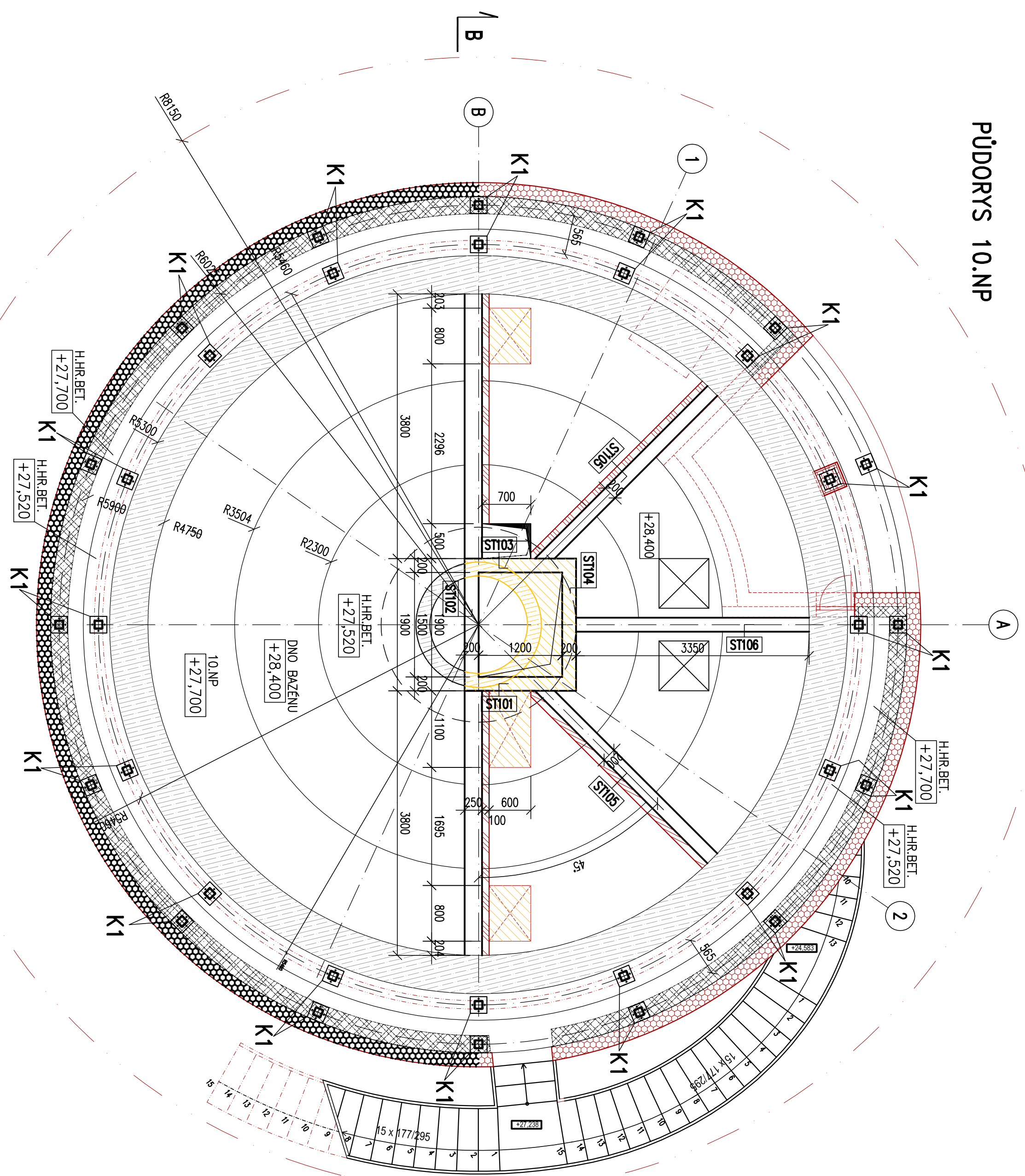
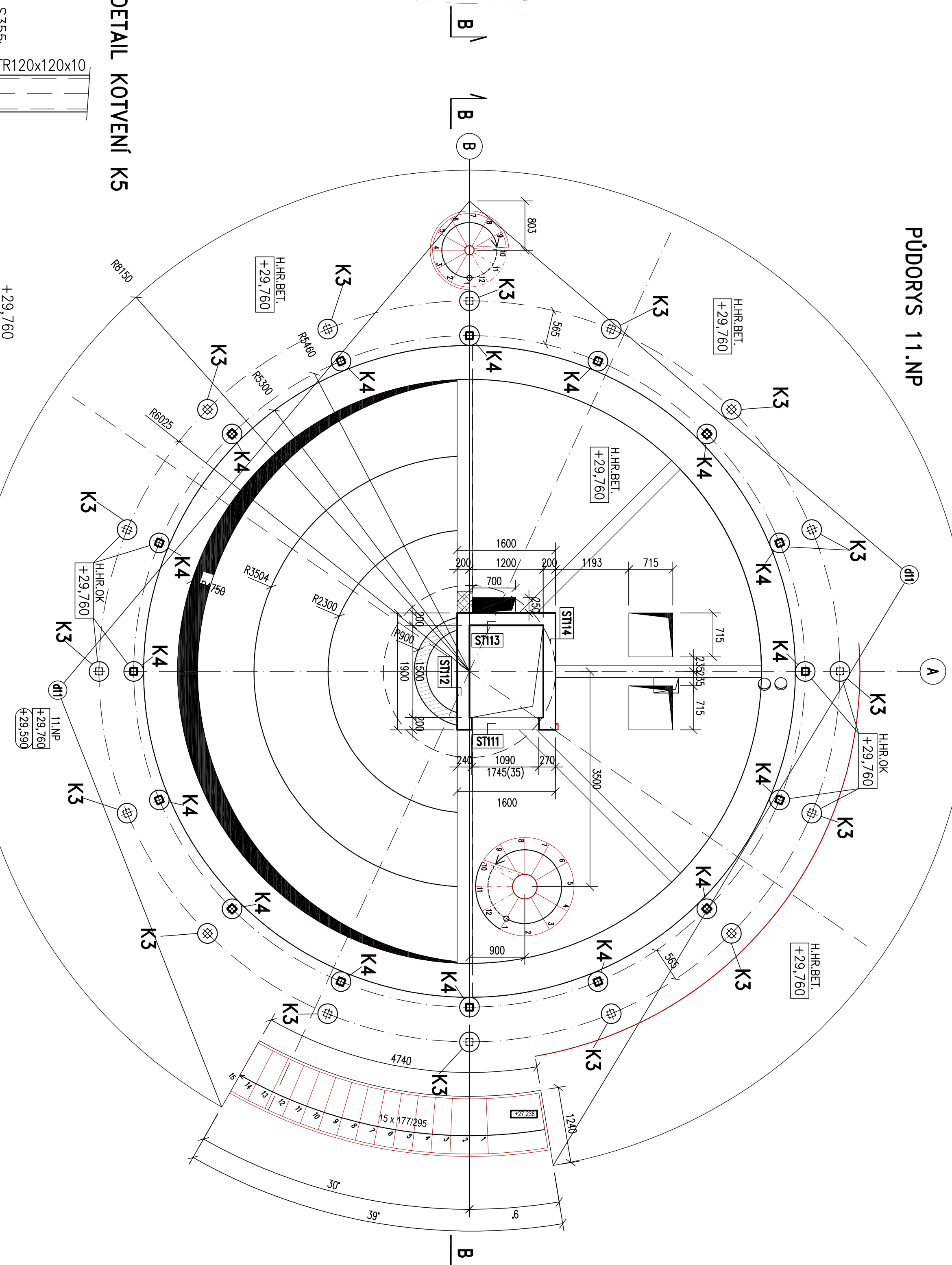


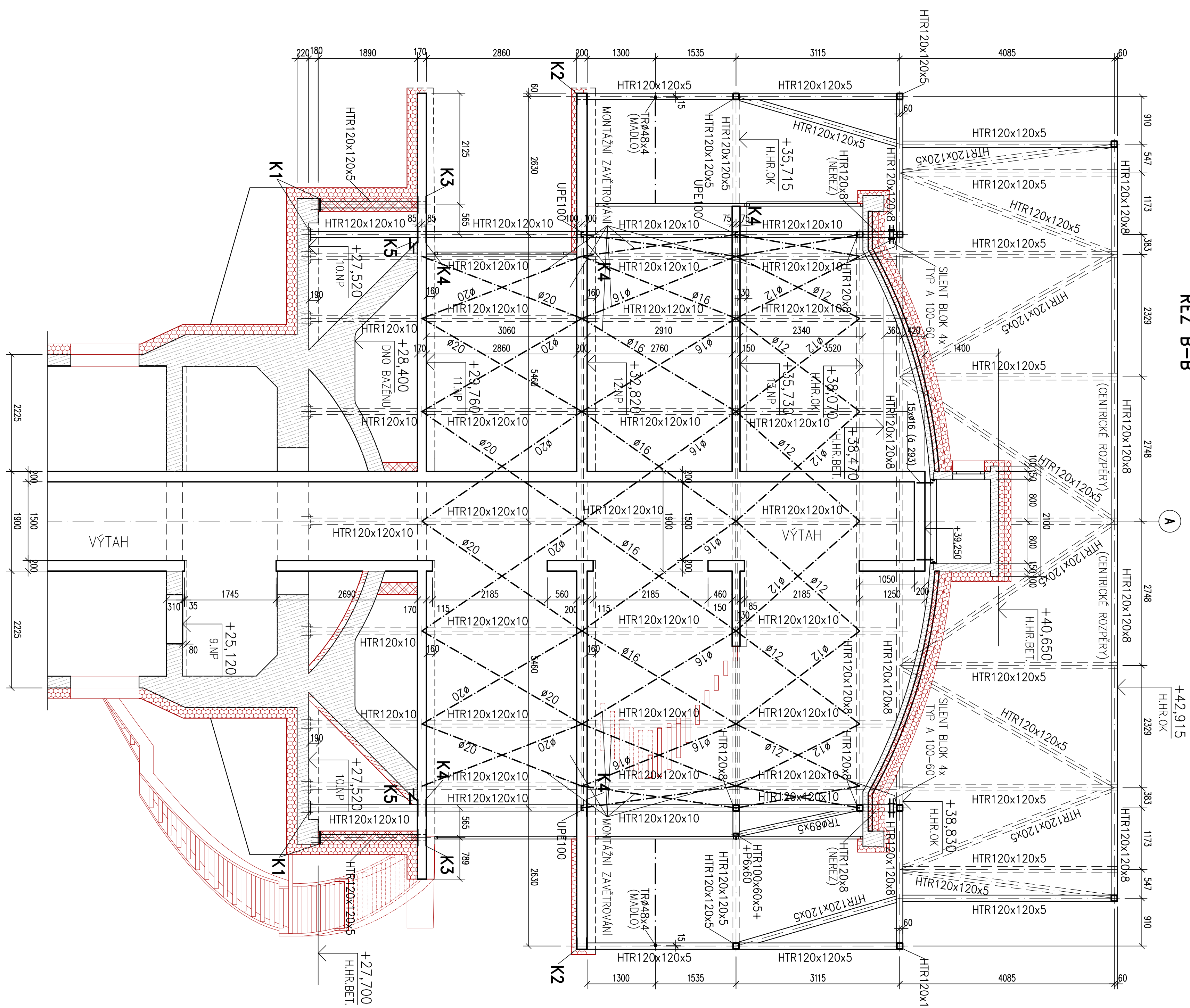
PUDORYS 10.NP



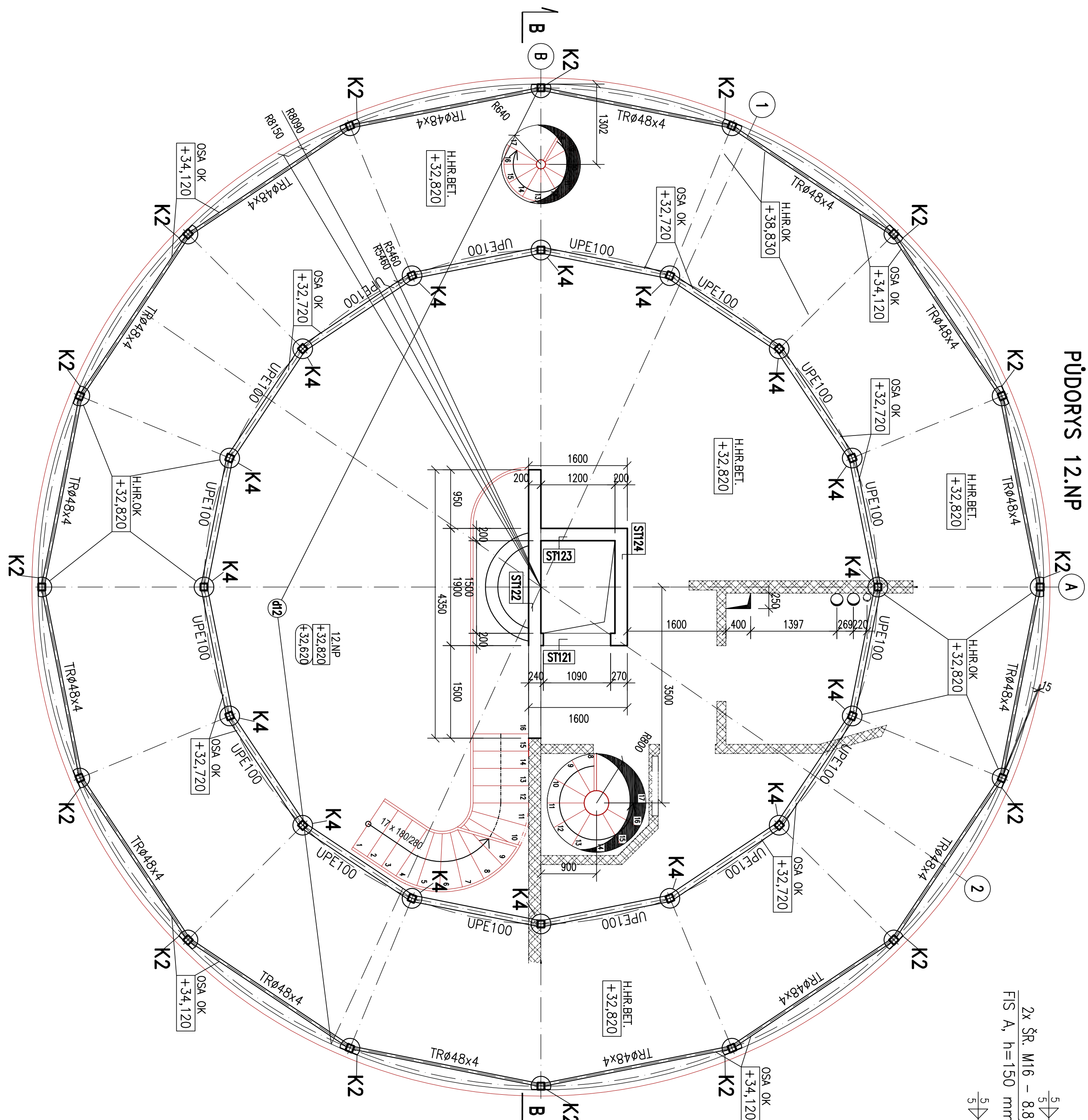
PUDORYS 11.NP



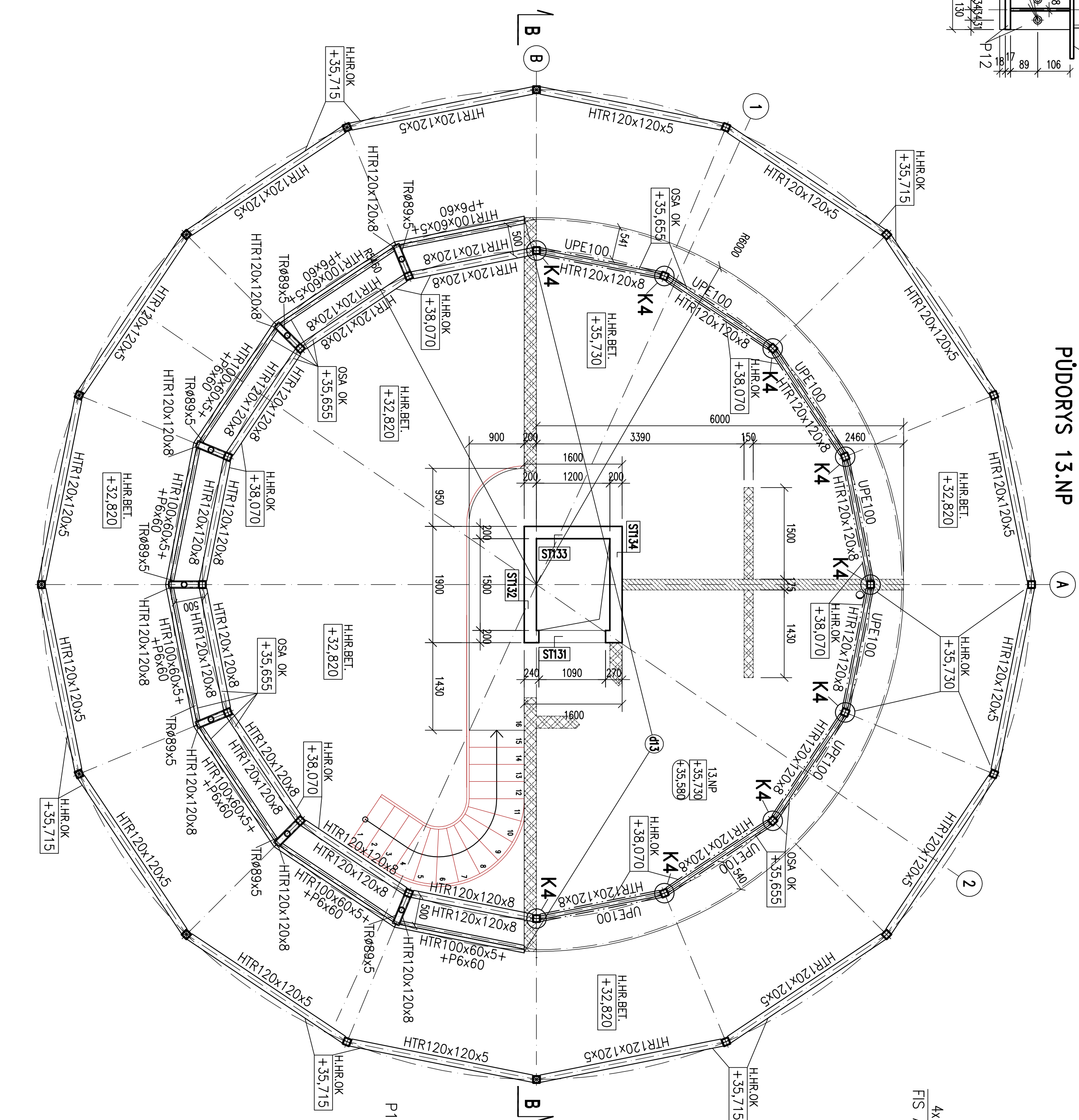
ŘEZ B-B



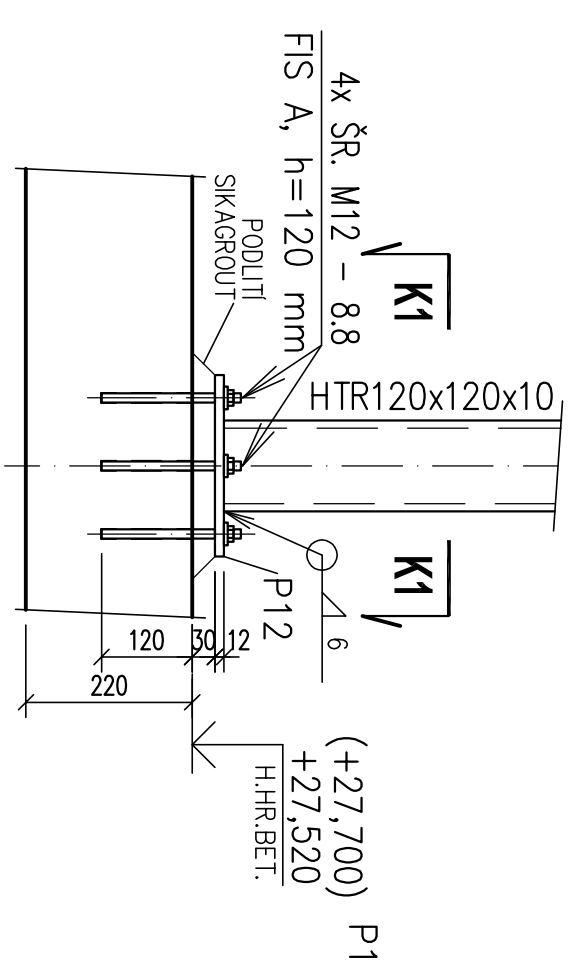
PÚDORYS 12.NP



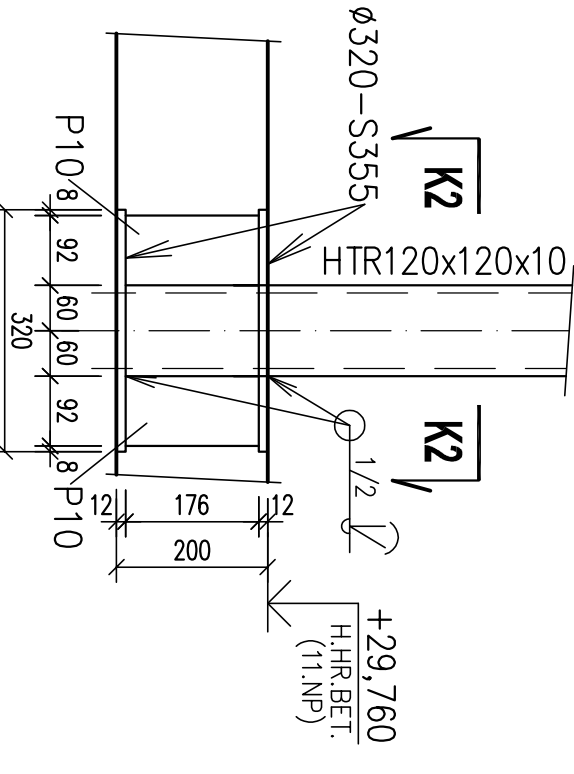
PUDORYS 13.NP



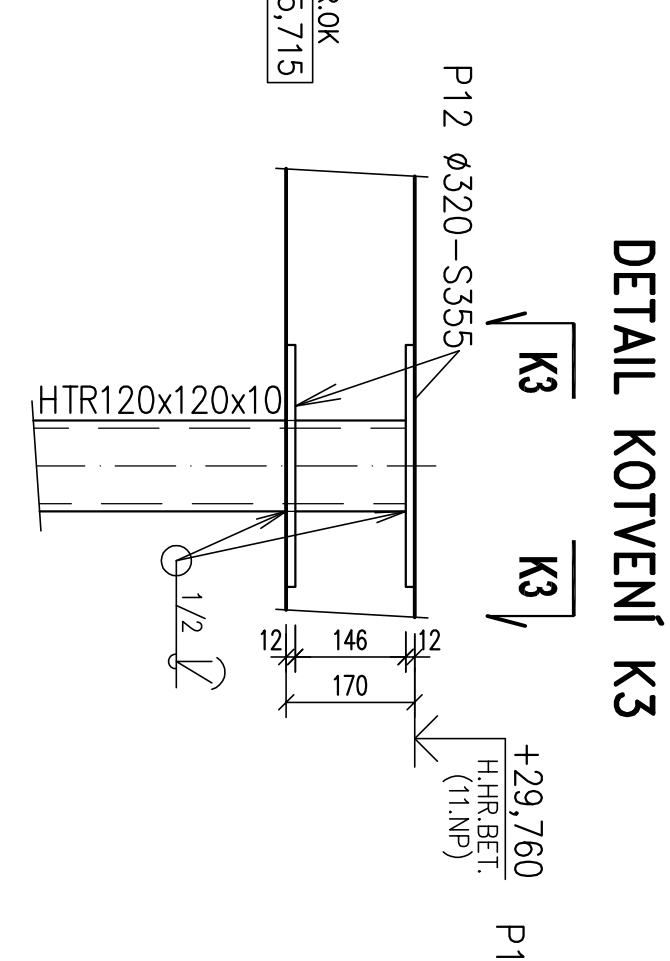
DETAIL KOTVENÍ K1



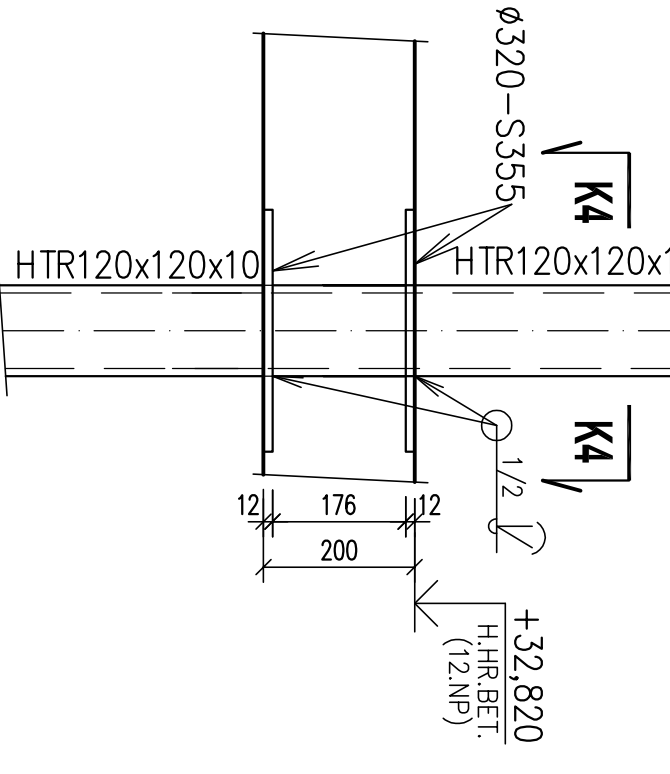
DETAIL KOTVENÍ K2



DETAIL KOTVENÍ K3



DETAIL KOTVENÍ K4



REL K2-NR2

4x SR M7 = R8
FIS A₁=120 mm

H1R120X120X10
H1R120X120X10

Ø 6
Ø 12

320
100 100
60 60 100
220

240
30 60 60 30
30 60 60 30

SR M7 = R8
K2-SOUPLU I HLAVICI

REL K2-NR2

MATERIÁL:
OCEL, S 235 A02, S 355 J023, AISI 316L
ŠROUBY V 10.9 (DLE DIN 6914, 6915, 6916) A B8
KOTLON ŠROUB (MERO TŘEČ) 8.8
BETON C 30/37 + X02 - ŽB DESKY A VÝTAK, ŠACHA
BETON C 30/37 + X03, X33, X42 - ŽB STŘEP, STĚNA A VÝTAK, ŠACHA V 10.9M
BETON C 30/37 + X03, X33, X42 - ŽB STŘEP A TERASA V 11.9M
BETON C 30/37 + X03, X33, X42 - ŽB STŘEP A TERASA, VE 12.9M
BETONŠKÁ VÝZUŽ B5008 (10 505 - R), SÍŤ B5008 (SZ)

[illegible]